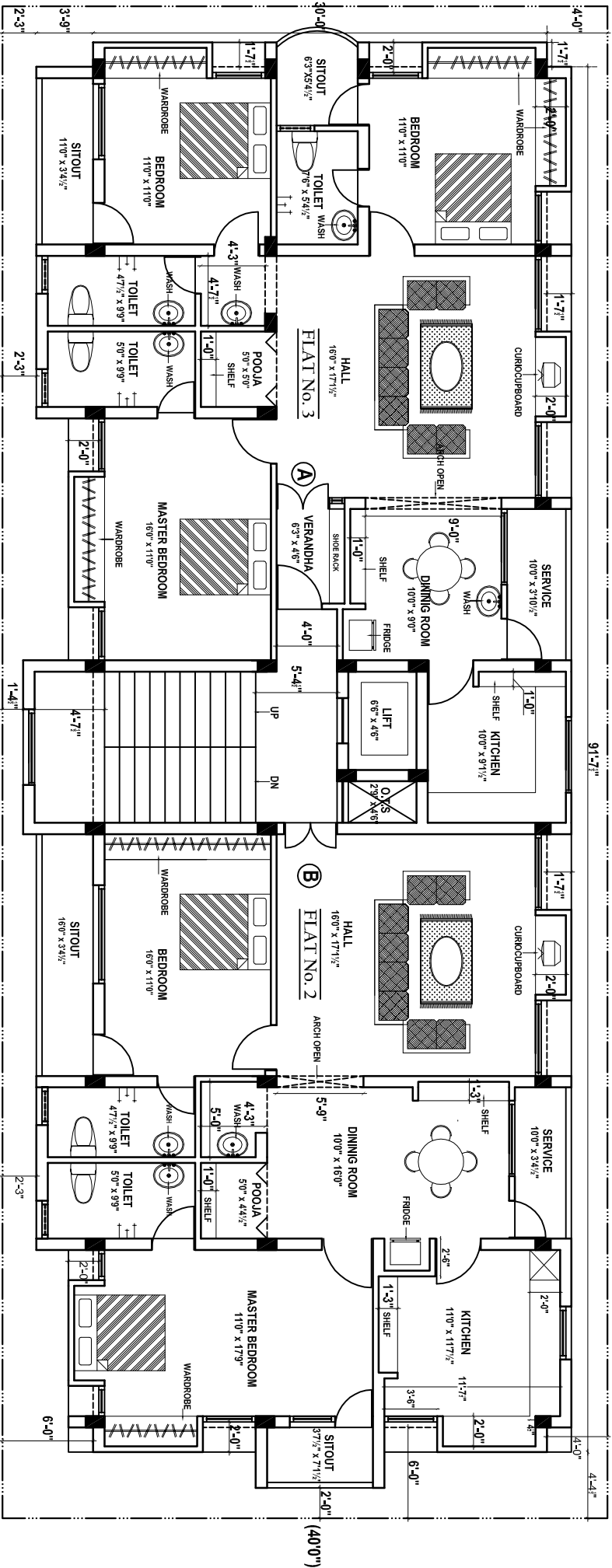


PROPOSED 'MANGHALAM NANDHANA' APARTMENT

(100'0")



(40'0")

MANGHALAM NANDHANA
 27 Geethapuram Main Road
 Srirangam, Trichy 620006

FIRST FLOOR PLAN



SUPER PLINTH AREA (A) : 1524 .00 sqft., +146 .00sqft.,
 1670.00 sqft.

AREA DETAIL

SUPER PLINTH AREA (B) : 1460 .00 sqft., +135.00 sqft.,
 1595 .00 sqft.